

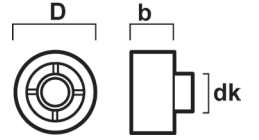
SPACE WASHER INDU-PROG

AREA OF USE

ESSVE Indu-Prog Spacer washer is designed for fixing frames when there are large joint widths.

DESCRIPTION

Indu-Prog Spacer washer is fitted on the Indu-Prog Frame sleeve. The spacer sleeve can be combined with both the Indu-Prog Pressure distribution washer or with multiple spacer sleeves if necessary. Manufactured of nylon.



Standard Pro Pack

Item no	Packaging	Contents
111120	ESSBOX 202	50 PCS